

# What Makes the Farmington River Wild and Scenic?



Prepared by the Farmington River Coordinating Committee





**“Certain selected rivers of the Nation which, with their immediate environments, possess outstandingly remarkable scenic, recreational, geologic, fish and wildlife, historic, cultural or other similar values, shall be preserved in free-flowing condition, and that they and their immediate environments shall be protected for the benefit and enjoyment of present and future generations.”**

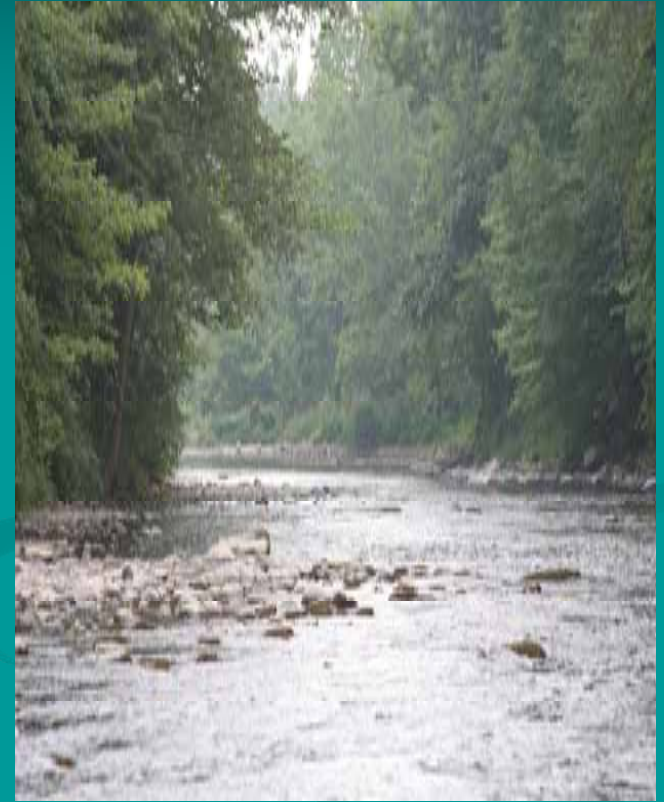
**(Wild & Scenic Rivers Act, 1968)**

# Classifications:

**(1) Wild River Areas:** Free of impoundments and generally inaccessible except by trail, with watersheds or shorelines essentially primitive and waters unpolluted.

**(2) Scenic River Areas:** Free of impoundments, with shorelines or watersheds still largely primitive and shorelines largely undeveloped, but accessible in places by roads.

**(3) Recreational River Areas:** Readily accessible by road or railroad, that may have some development along their shorelines, and that may have undergone some impoundment or diversion in the past.



# **Outstandingly Remarkable Values (ORVs)**

**Regionally Significant  
Unique, Rare or  
Exemplary...**

**Scenic  
Recreational  
Geological  
Ecological  
Historical  
Cultural  
Archeological**





# Benefits of the Designation

- Honor and Pride
- Local Control Through Zoning and Stewardship
- Federal Review of Federally-Funded and Permitted Projects
- Boost to Local Economies
- Leveraging Resources with Partners



# *Farmington River: Connecticut's First Wild & Scenic River*

- Designated in 1994 under the National Wild & Scenic Rivers Act
- Designation included 14 miles of the West Branch – from just below Goodwin dam in Hartland to the New Hartford – Canton town line



# Upper Farmington's Classification and ORVs



- Classified as “Recreational” due to the level of human activity and development in the river corridor and accessibility from roads and bridges.
- **Free-flowing** condition
- A regionally unique combination of **recreational** opportunities
- Regionally exemplary **fish habitat** for trout and Atlantic salmon
- Regionally unique **wildlife habitat** – particularly for bald eagles
- Regionally exemplary **historic and archeological** sites

# Farmington River Coordinating Committee (FRCC)

- FRCC was created by Congress in 1994 when the W&S designation was enacted.
- The Committee is made up of representatives of the riverfront towns (Barkhamsted, Canton, Colebrook, Hartland, and New Hartford), CT DEP, the MDC, FRWA, and National Park Service
- Farmington River Anglers Association was added a few years ago.

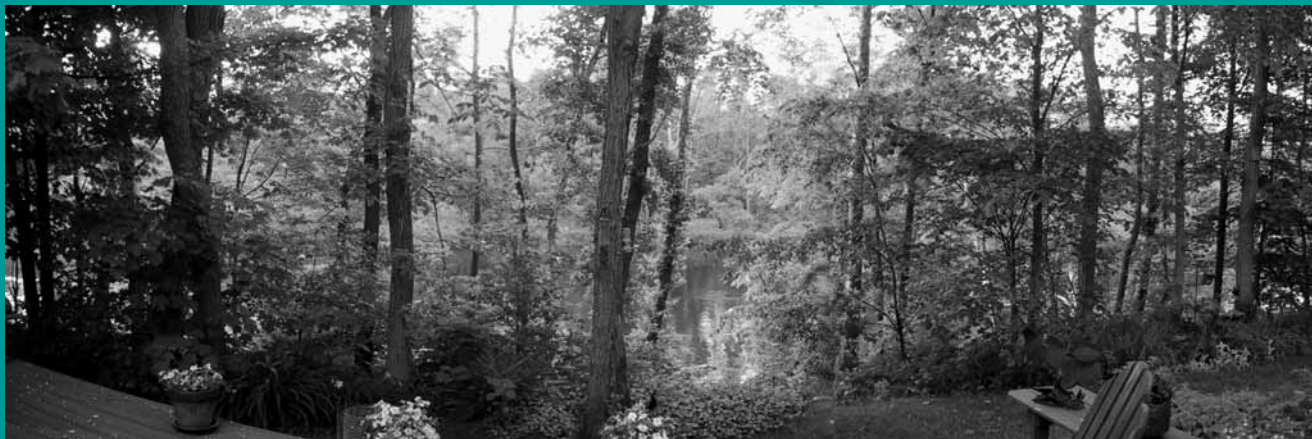


FRCC is charged with coordinating with stakeholders on river activities to ensure long-term stewardship of the river.



# FRCC's Major Roles

- Partnership with local, state, and federal governments as well as local organizations and property owners
- Provide a forum for discussion of river issues
- Offer on-going education efforts to inform and inspire people of all ages about the river
- Maintain records and continually seek more information on the health of the river and its inhabitants





# Examples of FRCC's Work To Date

# West River Road Bank Stabilization Completed 2003

- Project Total = \$100,000
- State of CT = \$50,000
- FRCC Funds = \$10,000
- Town of Barkhamsted = Labor and Equipment (Local match \$40,000)
- FRWA = In-kind Support



# Nepaug Forest Bank Stabilization Completed 2007

- Project Total = \$11,500
- In-Kind Contributions:
  - CT DEP – Labor and Equipment
  - MDC – Materials and Expertise
  - FRCC – Project Coordination
- Labor and Equipment = \$4,000
- Materials = \$7,500





# On-going Projects & Studies

- Mussels, Snails, Crayfish
- Flow Management
- Fish Habitat
- Access Management
- Habitat Enhancement
- Water Quality Monitoring



# Outreach and Education

- Open houses and exhibits
- Informational workshops
- Informational kiosks
- Newsletters
- Website – [www.FarmingtonRiver.org](http://www.FarmingtonRiver.org)



## Water Quality Protection and Road Maintenance Practices



Prepared by  
The Northwest Conservation District  
with funding from  
The Farmington River Coordinating Committee

# FRCC Grants Program



- Fish in Schools Programs
- Archeological Studies – Richard Smith site in Colebrook - and Squire's Tavern property in Barkhamsted
- Natural Resource Inventories
- Land Trust Start Up Funds
- River Celebrations
- Others....

# Nancy L. Johnson Scholarships

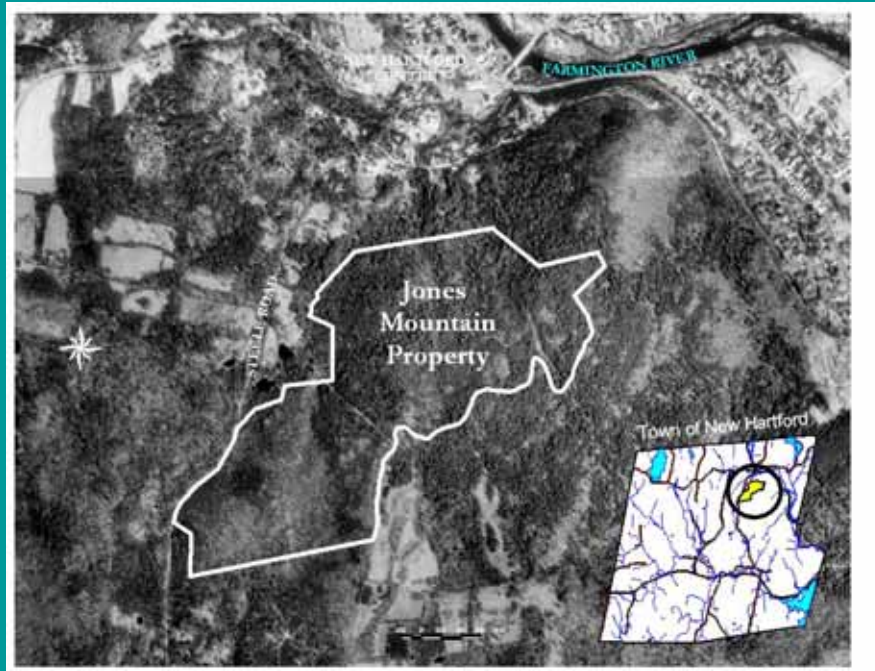
- Scholarships to graduating H.S. Seniors and College Students from five-town W&S area going into environmental studies.
- Created to honor Rep. Nancy Johnson who has championed the river on many occasions – including getting the upper section W&S designation and Lower Farmington/Salmon Brook Study.





# Land Protection and Land Trusts

- Land Protection program to assist local Land Trusts in planning and land acquisition.



# Partnering with Partnership Rivers



- The Farmington W&S River is one of 10 “Partnership Rivers” in the East that is managed under a similar partnership model.
- Each river has its own personality and players.
- Funding is sought collaboratively with the group as a program in the NPS budget.

# Who is FRCC?

**Barkhamsted** – Jean Miller; Mario Santoro alt.  
**Canton** – Bill Roberts  
**Colebrook** – Tom Stanton; Edna Travis alt.  
**Hartland** – Fred Jones, Nicki Hall and Sam Slater alts.  
**New Hartford** – Pat Keener; Mark Lindquist alt.  
**CT DEP** – Susan Peterson; Maryann Nusom Haverstock alt.  
**FRAA** – Rich Strolis; Tom Karpeichik alt.  
**FRWA** – David Sinish; Eileen Fielding alt.  
**MDC** – Tim Anthony; Carol Youell alt.  
**NPS** – Jamie Fosburgh; Liz Lacy alt.



# **Thank you for your continued support and stewardship of the Farmington Wild & Scenic River!**



FRCC's office is located at  
Squire's Tavern

Peoples State Forest

100 East River Road

Pleasant Valley, CT 06063

860-379-0282

Open Mon, Tues, Weds, Sun

[www.FarmingtonRiver.org](http://www.FarmingtonRiver.org)